

The New Hampshire *Civil Engineer*

New Hampshire Section of the American Society of Civil Engineers
P.O. Box 4953, Manchester, NH 03108

VOL. 36 No. 05

May 2015

Many thanks to S. W. Cole, our MAY SPONSOR OF THE MONTH!



S.W. COLE
ENGINEERING, INC.

Our Clients Make Better Decisions
From the Ground Up.

Eight Offices Throughout New Hampshire, Maine and Vermont
www.swcole.com

PRESIDENT'S MESSAGE

Recalling a Great Year, New Hampshire Section!



May is home to ASCE-NH's annual meeting. What a great year we had! The year was filled with tradition and change. The tradition capitalized on the Section's roots, while the change allowed the Section to grow. There were countless volunteers who helped make the year a success. Here are a few highlights from the year:

meetings with SENH, ASCE-VT, and ACEC-NH, a ski day / project presentation at Loon Mountain, and an Order of the Engineer ceremony at UNH. Other events before the year's close include a pavement seminar on May 4th, an annual meeting on May 18th, and an annual golf outing on June 5th. Don't miss your opportunity

to attend these outstanding events. Thank you Program Committee for coordinating GREAT events!

National Events: ASCE-NH was well represented at ASCE-National events with board members attending the Global Engineering Conference in Panama City, Panama, the ERYMC and WSBL in Miami, Florida, the Legislative Fly-in in Washington, DC, and the Region 1 Assemblies in Saratoga, New York and Portland, Maine. Thank you board members for attending these events and representing the New Hampshire Section!

Treasury: This year marks the resignation of a titan. The long-standing Treasurer will be stepping down to pursue other professional goals. ASCE-NH will be losing an asset following the Treasurer's 7 years of service. To accommodate the transition to a new Treasurer, ASCE-NH has conducted an audit and has been working diligently on transferring ownership of accounts. Thank you Budget Committee for all of your hard work!

Volunteering: The ASCE-NH Younger Member Group has traditionally led the charge for volunteer opportunities. This year was no different with volunteer opportunities such as the Thanksgiving Food Shuffle, and the upcoming UNH Tech Camp, and Living Bridge Project. This year ASCE-NH also held a volunteer day with Habitat for Humanity. Thank you ASCE-NH for giving back to your community!

Continued page 2

2014~2015 BOARD OF DIRECTORS

President

Nathan Cote, PE
SW Cole Engineering, Inc.
(603) 692-0088

President-Elect

Jay Hodkinson, PE
GZA Geo-Environmental
(603) 623-3600

Vice President

Marisa DiBiaso, PE
Hoyle, Tanner & Associates, Inc.
(603) 431-2520

Secretary

Nick Golon, PE
TF Moran, Inc.
(603) 472-4488

Treasurer

Tim Audet, PE
Hoyle, Tanner & Associates, Inc.
(603) 669-5555

Clerk

Matthew O'Brien, PE
Hoyle, Tanner & Associates, Inc.
(603) 669-5555

Sr. New England Council Delegate

Noah Chinburg, EIT
Golder Associates, Inc.
(603) 668-0880

Jr. New England Council Delegate

Thalia Valkanos, EIT
GZA Geo-Environmental
(603) 232-8751

Past President

Drew Brassard, PE
ARC Design Group, Inc.
(603) 966-7580

What's Inside?

- Sponsor of the Month
- Golf Tournament
- Meeting Announcements
- ASCENH is on Facebook And Twitter!
- Cranium Challenge
- Professional Directory

..... and more!

Newsletter Editor

Fran Weaver
Hoyle, Tanner & Associates, Inc.
150 Dow Street
Manchester, NH 03101
603-669-5555, x-111

Please Send Correspondence To:
The New Hampshire Civil Engineer
NH ASCE
PO Box 4953
Manchester, NH 03108
Email: fweaver@hoyletanner.com

Website: www.ascenh.org

NHASCE Advertising Rates

Sponsorship Ad:
1.3" x 2.3" Artwork in the
Professional Directory
&
Company website link on
NHASCE Website:
\$165.00/year

Classified Ad:
\$15/column-inch
3.5" column, 10-pt font

Advertisements should be placed with the
newsletter editor prior to the deadline.
Details on website.

*All newsletter submissions must be received
by the 10th of the month prior to publication.*

Next deadline
(For June/July 2015 issue):
June 10, 2015

Newsletter Publisher
Town & Country Reprographics, Inc.
Concord, New Hampshire

PRESIDENT'S MESSAGE (continued from page 1)

Report Card: A kick-off meeting for the New Hampshire-Infrastructure Report Card took place on March 19, 2015. Groups were established for each infrastructure category. Groups are currently working on data collection plans. Be sure to look for an updated report card in early 2016. Thank Legislative Affairs Committee for all of your hard work!

Online: New this year, ASCE-NH conducted online voting. The membership responded positively with over ten times membership participation as in previous years! This year included continued use of Constant Contact for meeting registration. The membership has responded positively to the user-friendly registration process. Throughout the year, the ASCE-NH website was updated regularly with events, volunteer opportunities, and committees to keep members well informed. New this year, ASCE-NH created a Twitter account. The Twitter account, in addition to our existing Facebook and LinkedIn accounts, will help reach more members. Thank you Technical Committee for all of your hard work!

Awards: New this year, ASCE-NH created a baseline application for the ASCE-National Outstanding Section & Branch award. With continued effort, I am confident the Section will be recipient of the award. ASCE-NH will be nominated for the Outstanding Section & Branch Website award in June 2015. This year one of New Hampshire's own received the Outstanding Civil Engineer Advocate of the Year award. Go New Hampshire Section! Earlier this year, ASCE-NH provided representation for selection of the 2015 Engineer of the Year, and Young Engineer of the Year, awards. ASCE-NH provided the Outstanding Civil Engineering Achievement award at the joint meeting with ASCE-VT.

Student Liaison: The "Student Liaison" position was created to improve connection between the UNH Student Chapter and ASCE-NH. This year the position was continued and helped improve connection between the UNH Student Chapter and the facets of ASCE-NH. The position helped to improve transition of membership from the UNH Student Chapter to the ASCE-NH Younger Member Group and ASCE-NH Section.

Newsletter: Each month the Section strived to provide a newsletter with both meaningful content and entertainment. The goal was to provide a newsletter that was both valuable and captivating. Thanks to an outstanding newsletter editor and contribution by several members, ASCE-NH was able to achieve this goal. The membership provided very positive feedback about the newsletter. Thank you to all the members who contributed to the newsletter and thank you to our outstanding newsletter editor!

Continued Page 10

We've Moved!



Our Manchester area office is now located at 13 Delta Drive, Unit 8, in Londonderry - just south of Manchester-Boston Regional Airport.

Not familiar with this office yet?

- Opened in Manchester in 2012
- Experienced manager and staff
- Large materials testing laboratory
- Great location for servicing central New Hampshire clients

Call our Manchester area office at
603-716-2111



www.swcole.com

Introducing



Performing test boring exploration services to support S.W.COLE's geotechnical engineering and geoenvironmental projects.

Why trust S.W.COLEx?

- Experienced driller and staff
- Engineers you know and trust
- New, reliable equipment
- Familiar, locally owned company

Call us toll free at
1-855-SWC-DRILL



www.swcole.com/explorations



When

Monday May 18, 2015 from 5:30 PM to 8:00 PM EDT

[Add to Calendar](#)

Where

The Riverside Room
250 Commercial Street
Manchester, NH 03101



[Driving Directions](#)

Contact Information

Jay Hodgkinson
ASCE New Hampshire Section
603-232-8742
jay.hodkinson@gsa.com

Event Menu

Hors D'oeuvres

Tomato, Basil, and Mozzarella Skewers
Prosciutto Wrapped Asparagus
Meatballs

Entrees

Greek Salad
Quinoa Salad
Seasonal Vegetable Medley
Chicken Florentine
Butternut Squash Ravioli

Cookies, brownies, and coffee will be served after dinner. Cash bar from 5:30-7:30 PM.

ASCE-NH Annual Meeting

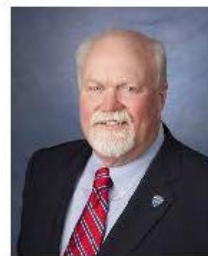
Please join us for dinner and networking at our Annual Meeting!

Monday, May 18 from 5:30-8:00 PM - 1 PDH offered

Help us congratulate the **OCEA** and **SCHOLARSHIP AWARD** winners, and help us welcome the 2015-2016 NH Section Board of Directors!

****SPECIAL GUEST SPEAKER****

2016 President of ASCE National, Mark W. Woodson, P.E.



Mark started Woodson Engineering in Flagstaff, Arizona over 20 years ago. His firm specializes in helping communities across the southwest achieve success. Mark's primary focus is consulting in City Engineering and Public Works management. Prior to starting Woodson Engineering, Mark was the Flagstaff City Engineer. While at the City, Mark was part of the leadership that put in place the standards to become the country's first Dark Sky City. He also worked on the development of the award winning Flagstaff Urban Trial System (FUTS) and modern Sign Code. Today, Mark serves as the ASCE President-elect, is on the Board of Engineers Without Borders-USA, is a Governor appointee to the Arizona Land Department Land Planning Committee, and is a Flagstaff City Council member.

Mark received his Bachelor of Science in Civil Engineering and an MBA from the University of Arizona in Tucson. Mark is a licensed civil engineer and surveyor in California and Arizona.



Visit www.ASCENH.org to find information on registering for this event!

Construction Slated to Grow as Economy Expands

By Kevin Wilcox

Modest economic growth is predicted across a broad range of nonresidential building categories this year, including transportation, lodging, and health care.

The construction industry is undergoing significant changes in the continuing aftermath of the Great Recession, but the recovery is moving forward and is likely to gain strength in the latter half of the decade, according to the architecture, engineering, and construction (AEC) consulting firm FMI Corporation, of Raleigh, North Carolina.

James C. Schug, a principal and engagement manager of the firm, recently presented highlights of FMI's annual U.S. Market Construction Overview at a webinar for industry leaders, cosponsored by eSUB Construction Software, of San Diego. He reported on trends from 2015 that would influence the market this year.

Schug said that the value of construction put-in-place—projects already erected—increased 7 percent in 2014, after making gains of 9 percent in 2012 and 6 percent in 2013. In the nonresidential sector, energy projects were a bright spot in terms of dollars invested, at \$96.5 billion, followed by highway and street projects, at \$81.3 billion.

Lodging projects registered the highest percentage growth, up 14 percent for the year. Health care and public safety spending both declined 2 percent in 2014. And spending was flat in the education sector.

On the basis of these results and its own research, FMI projects several strong years of growth in residential construction, including multifamily structures, and modest growth in nonresidential construction.

The firm predicts that residential construction—which tends to drive many types of supporting civil construction—will grow by 11 percent in 2015, followed by gains of 9 percent in 2016, 9 percent in 2017, and 8 percent in 2018. "Multifamily and single-family stay strong, which is going to be very good for the economy," says Schug, who noted that the underlying economic trends that drive housing construction, such as household formation, are continuing to rise. Schug noted that because a housing recovery didn't lead the country out of the economic doldrums in the past several years, as it had in past recessions, there is still quite a bit of pent-up demand for housing, presaging several strong years of growth to come.

FMI also projects growth, though of a more modest nature, in the nonresidential building sector, which was hit hard by the recession for a variety of reasons. (See " *The Economy 2015*" by Kevin Wilcox,



Construction of such residential structures as the Gramercy at Metropolitan Park, in Pentagon City, Virginia, is expected to increase sharply over the next few years. But nonresidential construction will grow, too, as the economy slowly crawls back from the Great Recession. Elvert Xavier Barnes Photography.

Continued page 16



7:00am - Registration
7:30am - Continental Breakfast
8:30am - Shotgun Start
1:30pm - Buffet Style Lunch
2:15pm - Announce Contest/Raffle Prize Winners

FORMAT

Scramble - Each player tees off on each hole. The best of the tee shots is selected and all players play their second shots from that spot, and so on until the ball is holed.

CONTESTS / PRIZES

1 st , 2 nd and 3 rd Place Teams	Putting Contest at the Turn
Closest to Pin	Hole in One Prizes
Longest Drive	Raffles (including 50/50)



*Rules will be reviewed prior to the Shotgun Start

SPONSORSHIPS

- Gold Sponsor – Sponsors lunch, raffle, and putting at the turn. Company name and logo will be displayed throughout the tournament. Includes a full page advertisement and sponsor of the month in the ASCE newsletter and a link on our website - \$500
- Silver Sponsor – Company logo distributed on a sleeve of balls and score cards and also includes acknowledgement in the ASCE newsletter and a link on our website - \$350
- Bronze Sponsor – Sponsors breakfast, longest drive, beer cart or closest to pin and also includes acknowledgement in the ASCE newsletter and a link on our website - \$250
 - Team sign-ups are encouraged, 4-person teams: - \$375
 - Individual sign-ups: - \$100
 - Hole sponsorships: - \$125
 - 4-person teams with hole/contest sponsorship: - \$475

REGISTRATION

Golf/Lunch/Raffles: \$100.00

Golf includes: Greens fee/cart/goodie bag/contest participation/continental breakfast

Send Reservations: Email preferred to Marisa DiBiao, mdibiao@hoyletanner.com

Reservation Deadline May 29, 2015

Directions: Take I-93 to Exit 15W and merge onto 202W/US-4/393W. Turn right onto North State/US-3 at the end of 393. Proceed approximately 2.9 miles to a fork in the road. Bear right onto Sewall's Falls Road at the sign for Beaver Meadow. Course is on the Right.

2015 NH-ASCE Golf Scramble

June 5, 2015

Beaver Meadow Golf Club - Concord, NH

8:30 am - Shotgun Start

Team #1 Name _____

Player #1 _____

Player #2 _____

Player #3 _____

Player #4 _____

Team Contact _____

Email/Phone _____

Team #2 Name _____

Player #1 _____

Player #2 _____

Player #3 _____

Player #4 _____

Team Contact _____

Email/Phone _____

Gold Sponsorship Company Name: _____
(Please email logo and contact name to mdibiaso@hoyletanner.com in jpeg format)

Silver Sponsorship Company Name: _____
(Please email logo and contact name to mdibiaso@hoyletanner.com in jpeg format)

Bronze Sponsorship Company Name: _____
(Please email logo and contact name to mdibiaso@hoyletanner.com in jpeg format)

Hole Sponsorship Company Name: _____
(Please email logo and contact name to mdibiaso@hoyletanner.com in jpeg format)

Entry Deadline is Friday May 29, 2015.

**RECAP: ORDER OF THE ENGINEER
INDUCTION CEREMONY & BROAD
STREET PARKWAY PRESENTATION**



An ASCE-NH/GS-EWRI/UNH-ASCE event.

By Harrison Roakes, EIT
Sanborn, Head & Associates, Inc.

Speakers: Professor Cook, Professor Henry,
Professor Fu, Roch Larochelle, P.E., Nate
Cote, P.E.

Guest Presenter: Kate Emma Schlosser, P.E.

With a room packed full of UNH civil and
environmental engineering seniors, eager to

graduate and start working, the annual
Order of the Engineer event serves as a
chance for students, working professionals
and professors to focus on the reason
engineering is such a respected and trusted
profession: ethics and service.

Ethics and service may seem like dry topics,
but on April 20th, 2015, in a room of young
engineers about to storm off into the
workforce the topic couldn't be more
relevant and the speakers pounced on the
chance to emphasize its importance.

Many of you have heard the story of the
Quebec City Bridge collapse; the series of
mistakes and negligent actions of the Chief
Engineer were largely to blame for the
bridge failure that resulted in loss of life. As
shared by Professor Cook and Professor
Henry, this disaster sparked the need and



interest in forming a fellowship of engineers (originally in Canada, but increasingly in the U.S.) that openly adhere to the highest ideals of professional ethics and service.

The first ring ceremony was held at UNH in 1994, and has since become an important step for graduating seniors as they head into the “real world”. In the past, the ceremony was held in lecture-style rooms; however, event organizers Justin Keefe (UNH) and Harrison Roakes (Sanborn Head) received lots of positive feedback for the change in venue to the Huddleston Hall dining room with a dinner and presentation following the ceremony.

The guest presenter, Kate Emma Schlosser, P.E. (Sanborn Head), shared her work on The Broad Street Parkway project, which will be a 1.8 mile-long stretch of roadway connecting the F.E. Everett Turnpike and downtown Nashua. As a Senior Project Manager for Sanborn Head, Kate Emma led the effort needed for the management and relocation of several asbestos disposal sites encountered during construction, as well as other general environmental consulting work throughout the Broad Street project.

Kate Emma’s presentation tied in themes of the night, emphasizing the importance of collegiality when working on big project teams with many consultants and contractors involved. She also emphasized the importance of meeting project needs (i.e. schedule and budget), while still holding paramount the health, safety, and welfare of the public.

Finally, we would like you to join us in celebrating and recognizing the newest Members of the Order of the Engineer:

Joel E. Asencio, EIT
Matthew Baker EIT
Nicholas Bateman, EIT
Cameron Bellisle, EIT
Andrew Bingham
Jacob Blunden, EIT
Patrick Bogle
Ryan Bottesini, EIT
Taylor Buchalter
Megan Burke
Eric Casey
Zachary Chabot, EIT
Gregory Clauson, EIT
Nathaniel Sean Colp, EIT
Daniel E. Crochetiere
Alexandre Santana Cruz
Eshan V. Dave, Ph. D.
Daniel Del Tufo, EIT
Jessica L. D’Entremont
Elizabeth Garvey
Geoffry Glover, EIT
Kathleen Hanlon
Adrienne Hill
Brittany J. Holbrook
Christopher D. Jacques, EIT
Olivia Jobin

Rachael A. Kenny
Robert Bruce Langlands III, EIT
Jaclyn Lemieux
Stephen Leonardo, EIT
Ewen Ian S. MacKinnon III, EIT
Joshua R. Mele, EIT
Katerina N. Messologitis
Chelsea Kaye Noyes
Morgan A. Palmer, EIT
Jonathan A. Proulx, EIT
Laith Qurreh
Brandon Ransom
John Reilly
Antonio Santiago
Chelsey Serrano
Tyler Shedd EIT
Ian Sleeper
Amanda St. Pierre
Jodie Bray Strickland, P.E.
Megan Suffel
Scott Daniel Syrene
Priscilla Tengdin, EIT
Daniel Welch
Christopher J. Welsh
Kelsey Lynn Winkler

We look forward to another successful celebration next year, and encourage students and professionals alike to show support by reinforcing the importance of ethics and service through our work and through our interactions with fellow engineers and the public.

New Hampshire Section ASCE

PRESIDENT'S MESSAGE (continued from page 2)

New Volunteers: Several new volunteers were fostered over the year. I want to express my sincere thanks to the local engineering companies and their employees who have, and will be, participating in the ASCE-NH organization. A set of motivated volunteers is what makes an organization great, a profession great, and a surrounding community even better. This year two new volunteers were included on the ballot for the Board of Directors as candidates for the New England Delegate positions. Several other volunteers have signed up to participate on committees in addition to many returning volunteers. Thank you volunteers!

Mission Statement: At the start of the year, ASCE-NH updated its mission statement. The new mission statement reads: "It is the mission of the ASCE - New Hampshire Section to uphold and enhance the integrity of the civil engineering profession by collaboration of our engineers, communication with our legislators, interaction with our educators and students, and service to our community." Looking back at the year's accomplishments, ASCE-NH stayed true to its mission. Thank you Board of Directors for your leadership and to the many volunteers who contributed and helped ASCE-NH stay true to its mission!

In summary, it was a great year New Hampshire Section! Thanks again to all the volunteers who helped make the year a success. See you at the Annual Meeting on May 18th!

Nathan Cote, P.E. is a Geotechnical Engineer with S. W. Cole Engineering, Inc. He earned B.S. and M.S. degrees in Civil Engineering from the University of Maine. He lives in Dover, New Hampshire with his wife, Erin and daughter, Iris.

Visit us on Facebook (www.facebook.com/asceNH) and LinkedIn (www.linkedin.com/grp/home?gid=4868478)



News from around the engineering community

SANBORN HEAD & ASSOCIATES ANNOUNCES THE PROMOTIONS OF STAN SADKOWSKI AND KEVIN STETSON TO VICE PRESIDENT Westford, MA (April 6, 2015) - Sanborn Head & Associates, Inc. of Westford, MA is proud to announce the promotions of two key staff in their Developer Client Service Area. **Stan Sadkowski, P.E.** and **Kevin Stetson, P.E.** were both named Vice President's of the firm on March 10th, 2015. Please join us in congratulating Stan and Kevin on their accomplishments and well-deserved advancement. You can reach them at ssadkowski@sanbornhead.com and kstetson@sanbornhead.com.



S. W. Cole Engineering, Inc. (S.W.COLE) welcomes Eric J. Baron, PE to the firm's Somersworth, New Hampshire office. With the addition of Eric, the office now has five geotechnical engineers on staff. Eric, a New Hampshire native, received his bachelor's degree in civil engineering from the University of Maine in Orono. Prior to his employment at S.W.COLE, he worked for GZA GeoEnvironmental, where he was an assistant project manager. In this role, Eric was involved in a diverse range of projects and gained geotechnical analysis and design experience with both deep and shallow foundations, soil slope stability and rock slope evaluation and catchment design, construction oversight and observation of earthwork and foundation installation, environmental monitoring for contaminated sites and more. Eric has a large amount of experience with transportation projects.



2015 Engineer's Week Photo with Governor Hassan

2015 Engineer of the Year – Alex Azodi

2015 Young Engineer of the year – Jason Beaudet

The following professional society representatives:

NH Society of Prof Engineers (NHSPE)	Dirk Grotenhuis
Amer Society of Civil Engin-NH (ASCE)	Nathan Cote
Struct Engin of NH (SENH)	Adam Stockin
Inst Electrical & Electronics Engin – NH (IEEE)	James Henderson
Amer. Council Eng Co. –NH (ACEC)	Bill Moore
Amer Society Heating Refrig & AC Engin – NH (ASHRAE)	Rich Ruel
Amer Society of Mech Engineers of No. New Eng (ASME)	Caleigh MacPherson
NH Public Works Assn (NHPWA)	John Trottier
NH Institute of Trans Engin (NHITE)	Jeff Santacruz
Society of Am Mil Engineers (SAME- Piscataqua)	Cmdr. Jason Crosby
Society Women Engin (SWE)	Laura Curioso

ASCE-NH HAS A STUDENT LIAISON!



To improve communication between the New Hampshire Section of ASCE and the UNH Student Chapter of ASCE, the “Student Liaison” position was created. The position was pioneered by Andrew C. Wells, EIT a graduate of the UNH Class of 2014. This year the position has been continued with Justin A. Keefe with the UNH Class of 2016. Thank you Student Liaisons for participating in this very important role! The following is a brief biography for Justin A. Keefe.

Justin A. Keefe | Student Liaison

I am a non-traditional junior in the Civil and Environmental Engineering Department at the University of New Hampshire. I am the President of UNH-ASCE and serve on the Student Advisory Board. Before attending UNH, I was a problem solver in the landscape industry for 10 years. I designed and installed residential landscapes including trees, shrubs, walkways and patios. I also estimated and managed commercial landscape installations. I am native of Scituate, MA and currently reside in Nottingham, NH with my fiancé and four-legged friend.



ASCE-NH HAS A TWITTER ACCOUNT!



ASCE-NH has recently created a Twitter account ([@ASCE_NH](https://twitter.com/ASCE_NH))! Along with our Facebook and LinkedIn pages, this will help reach more members and keep current members more informed. As an extension of the *Report Card for New Hampshire's Infrastructure*, it will also seek to educate the public about issues that matter most to engineers. Follow us, tweet to us, and spread the word!

ASCE-NH Provides Strong Representation at ASCE National Fly-In

ASCE held its 15th Annual Legislative Fly-March 24 and 25th in Washington, DC, bringing 200 ASCE members from 46 states and the District of Columbia together to learn about issues affecting the civil engineering profession and then share the civil engineers' viewpoint on those issues with their elected officials on Capitol Hill. ASCE-NH was represented this year by Advocate of the Year Darren Benoit (McFarland-Johnson), Jay Hodkinson (GZA GeoEnvironmental), Tony Puntin (Beta Group), and student member Andrew Wells (University of Delaware).

The fast paced event kicked off Tuesday afternoon with training sessions followed by an award dinner. At dinner, winners of the Outstanding Civil Engineering Advocate of the Year awards were recognized: OUR OWN Darren Benoit received the individual award, for his tireless advocate efforts to pass last year's state gas tax. The awards presentation was followed by a speech by Peter Rogoff, acting under secretary of transportation for policy at the U.S. Department of Transportation (DOT). Rogoff thanked the attendees for traveling to Washington to share their expertise with lawmakers. In his remarks, he warned that 23 short-term extensions have caused local and state leaders to "lose their vision" to plan long-term projects, which are what America needs most to be ready for future population growth and demographic trends. He continued by saying the DOT is focused on working with Congress to increase investment in transportation infrastructure, warning that "if we don't change course, it's dismal."



ASCE-NH Contingent Meeting with Congressman Guinta

The next day, ASCE-NH met with New Hampshire senators and representatives to discuss fixing the Highway Trust Fund which will require reauthorization by May 30th of this year and the looming trust fund insolvency in August. For New Hampshire and other smaller states that have more modest revenue streams, the continued extensions are having a crippling effect. Without confidence that federal dollars will be available, New Hampshire is again restricting spring construction budgets. It is critical to complete the I-93 widening project. If this project is delayed there will be impacts to the construction industry, major impacts to the commuting public, and over all the delay of the project would inch closer to the end of the project permits in 2020. After this time if the entire widening project is not complete, its federal permits will begin to lapse, forcing delays and further financial losses as the permitting process will need to be re-evaluated with many of the battles waged to initiate the project needing to be renewed.

We also discussed the appropriation of the Water Resources Development Act (WRRDA) which was approved last year. However, the funds still need to be appropriated. The keys to this legislation include the creation of a national levee safety program, reauthorization of the National Dam Safety Act, increases revenue to the Inland Waterways Trust Fund, and restricts the diversion from the Harbor Maintenance Trust Fund. There is still work to be done to ensure that this bill will have the intended benefits, however this legislation was a huge step in the right direction.

Before and during the Fly-in, both Darren Benoit and Tony Puntin did radio interviews with Arnie Anesen (WNHN 94.7) and Laura Knoy (NPR 89.1). We have provided links to the broadcasts for your listening pleasure, enjoy!

<http://www.wnhnfm.org/the-attitude-with-arnie-arnesen-3202015/>

<http://nhpr.org/post/road-better-infrastructure-ideas-nh-and-around-country>



Investing in America's Economy

May 11-15, 2015

Affiliate Guide

What is Infrastructure Week?

Now in its 3rd year, Infrastructure Week is a national series of high-profile events, paper releases, media coverage, policy advocacy, and other efforts to draw attention to both the success stories and challenges facing America's critical infrastructure assets. Organized by leading organizations representing America's business, labor, and policy-making communities, Infrastructure Week is designed to convene a broad coalition of stakeholders to unite in a call to action to address America's infrastructure investment imperatives. While not an exercise in policy consensus, the Week affords participants and Affiliate organizations an opportunity to amplify their message, leverage each other's networks, and gain high-visibility media attention to promote a broad spectrum of infrastructure modes, priorities, and needs.

Infrastructure Week 2014 united more than 30 organizations, convened more than 20 events in and beyond Washington, and provided the backdrop for major infrastructure announcements by the President, Secretary of Transportation, and other key Administration officials. ASCE will be serving as a steering committee lead organization in this year and will focus on highlighting priority infrastructure issues nationally and at the local level. Infrastructure Week 2015 will build upon the foundations laid over the past two years to build an inclusive, non-partisan grassroots to treetops campaign to rebuild and renew America's infrastructure.

This movement cannot be built alone, and our future success depends on the active engagement and participation of a

broad group of stakeholders united around our core message—**infrastructure is an essential part of investing in America's economy...**

Steering Committee Members

- AFL-CIO
- American Society of Civil Engineers
- Building America's Future
- Brookings Metropolitan Policy Program
- Council on Competitiveness
- National Association of Manufacturers
- U.S. Chamber of Commerce

Benefits of Being A Part of Infrastructure Week

Infrastructure Week is a grassroots, stakeholder-driven movement, and you and your constituents are its strength. The Infrastructure Week Organizing Committee provides the central platform around which Affiliate organizations and participants can build momentum, plan and amplify the reach of events, and leverage networks, media, and visibility.

Affiliates will be able to list and link to events through the Infrastructure Week website (which garnered more than 20,000 discrete views in its first year), will be able to place press-releases and other media on the Week's website, and will be invited to participate in bi-weekly organizing calls to optimize the Week's agenda, visibility, and partnerships.

How to Participate as an Affiliate

There are multiple ways that your organization can participate in Infrastructure Week. Specifically, we ask that Affiliates run an **event, conference, workshop, reception, webinar, or release a paper** during the Week. While many organizations are creating original content for the Week, others are simply aligning existing efforts with ours to increase their national profile. Examples of Affiliate activities in past years include:

- A public forum at the Congressional Visitor's center on innovative infrastructure finance tools
- A webinar on creating successful ballot initiatives for increasing investment in public transit
- A private reception with elected leaders and corporate executives
- The release of a new whitepaper that quantified the number of Americans employed in the infrastructure sector
- A private workshop with state department of transportation and economic development policymakers

Affiliate Expectations

As Infrastructure Week is a broad platform to amplify our shared interests in supporting America's critical infrastructure needs, the expectations for Affiliates are modest:

- Include top line messaging related to Infrastructure Week 2015 in planned events
 - Include in outgoing communications (newsletters, media advisories, press releases, member outreach) that events are affiliated with Infrastructure Week, and link back to our website
 - Include our hashtag, #RebuildRenew, as part of your social media outreach
- **What Infrastructure Week is NOT...**
- Importantly, Affiliates WILL NOT be asked to agree on or align policy positions. This effort is NOT focused on policy concurrence. Each organization has its individual policy priorities.
 - Infrastructure Week does not provide funding, event spaces, or event planning services to Affiliates. However, many Affiliates in the Infrastructure Week network have successfully partnered to share costs, plan joint events, and leverage each other's members and stakeholders.

For More Information

For more information on getting involved with Infrastructure Week 2015, visit www.infrastructureweek.org

ASCE Coordination Contact

Brittney Kohler, bkohler@asce.org
 O: 202-789-7854 / 800-548-ASCE (2723) ext. 7854



www.infrastructureweek.org



#RebuildRenew

Civil Engineering, March 2015, pages 56 to 59.). The total value of nonresidential building construction put-in-place is projected to be up 6 percent in 2015, 6 percent again in 2016, and then up 5 percent in both 2017 and 2018.

Nonresidential construction includes everything from health care and public safety structures to transportation, recreation, and manufacturing structures. And because some sectors will grow more briskly than others, Schug said, "This is causing companies to be a little more diverse. There's not one market where you can jump to today. I think we all have to stay pretty flexible."

Lodging is likely to remain a strong point in the sector; FMI projects it to grow by a significant 14 percent in 2015, a rare double-digit percentage within the nonresidential category. Growth will taper to just 5 percent by 2018. Manufacturing is also projected to be a high point, with projected growth of 10 percent in 2015, followed by 9 percent in 2016, 7 percent in 2017, and 6 percent in 2018. Office construction is projected to grow by 8 percent in 2015, tapering to 4 percent in 2018. In fact, new office space is being leased more quickly than existing space, FMI reported.

Other categories will grow as well, but at slower rates. Spending in health care is projected to grow 5 percent in both 2015 and 2016, strengthening to 7 percent in 2017 and then 6 percent in 2018. More ambulatory care centers are likely to be needed, and new hospitals will require engineering to accommodate the newest technologies, Schug noted. Likewise, education construction will trend higher, with projections of 3 percent growth in 2015, doubling to 6 percent by 2018.

Public safety structures-police and fire stations and courthouses, for example-as well as communications-related structures are weak spots in the forecast. Public safety is projected to grow just 1 percent in 2015, reaching 4 percent by 2018. Communication spending is projected to grow by just 4 percent in 2015, tapering to 3 percent growth by 2018.

FMI projects power construction to be strong in the nonbuilding sector-6 percent each year through 2018-but spending on streets and highways, which seems caught in never-ending budgetary delays, is predicted to grow by just 1 percent in 2015 and 2016, 2 percent in 2017, and 3 percent in 2018.

FMI noted key changes in the AEC professions, including a continuation in the trend toward construction firms hiring their own engineers to assist with design issues. Although these engineers aren't necessarily preparing design documents, Schug notes that they translate project specifications into workable building plans. "There is significant value in that," Schug says.

Another significant trend in the industry is the transition of many critical baby-boomer leaders into retirement, which is facilitating a change in leadership and sometime ownership. Schug noted that FMI has consulted with many firms recently that have focused on creating leadership transition plans that can ideally be eased into an 8- to 12-year period. Many such plans had been put on hold during the recession.

For this reason, Schug said, firms that are depending on the value of their long-term employees need to examine the systems they have in place to capture those employees' institutional knowledge and transfer that wisdom and experience to the next generation. "Maybe it won't take 30 years to get somebody up to speed. Maybe we can figure out how to do that in 10," he said. "It's hard to replace experience, but maybe we can streamline some of that learning experience and get folks to move more rapidly along that curve."

Thank you to Jay Hodkinson for providing these ASCE Article Reprints with the NH Section!

CORPORATE SPONSOR OF THE MONTH

What is a *Corporate Sponsor of the Month*? This could be YOUR company! For \$250.00, you will receive a 8" x 1/2" Front Page Banner Advertisement featuring your company. The ASCE-NH homepage will show your company logo, linked to your firm's homepage. In addition, a full page of our newsletter will be yours -- available for you to tell our readers anything you want about your company -- maybe you've recently acquired some new talent you want to boast about; or perhaps you just completed a very special project, or even reached a milestone anniversary year! The choice is yours - any topic that would be of interest to your colleagues in the engineering industry -- You may use the space for photos, narrative, whatever way you decide to put your company's name -- literally -- in the headlines!

December 2012	CDR Maguire
January 2013	GZA GeoEnvironmental, Inc.
February 2013	Fay, Spofford, & Thorndike
March 2013	Tighe & Bond
April 2013	International Erosion Control Systems, Inc.
May 2013	S.W. Cole Engineering, Inc.
June/July 2013	Nobis Engineering
August/September 2013	International Erosion Control Systems, Inc.
October, 2013	JTC, Inc.
November, 2013	VHB
December 2013	Fay, Spofford & Thorndike
January 2014	Hoyle, Tanner & Associates, Inc.
February 2014	Kleinfelder
March, 2014	ADS
April, 2014	Kleinfelder
May, 2014	Dubois & King
June/July 2014	TF Moran
August/September 2014	S.W. Cole Engineering, Inc.
October, 2014	Tighe & Bond
November, 2014	
December, 2014	Shea Concrete Products
January 2015	VHB
February 2015	
March 2015	Golder Associates
April 2015	Parsons Brinckerhoff
May 2015	S. W. Cole Engineering, Inc.
June/July 2015	To be announced!

Thank you to our past Sponsors of the Month for showing support for the ASCE's New Hampshire Section! Please consider signing up for sponsorship of future editions of The New Hampshire Civil Engineer. Remember, all proceeds go directly to the Scholarship Fund!!

To reserve space or learn more, contact fweaver@hoyletanner.com!

Of course, our regular classified advertising section is still available. See page 2 for more information.



UNIVERSITY of NEW HAMPSHIRE

2015 Teacher-Engineer Summer Scholar Academy, July 13-17th 2015

Goal:

This Academy will form a relationship between the engineering profession and middle school education on a personal level to promote engineering problem solving based on fundamental math and science principles and practices. Four educational teams of 2-3 practicing engineers with a pair of middle school teachers (math and science) will be created to support the development and integration of engineering education standards in the middle school classroom. The goals of this academy include:

- Familiarize teachers with engineering practices as set forth by the Next Generation Science Standards.
- Provide resources for the incorporation of engineering practices into the middle school curriculum that aligns with the Next Generation Science Standards.
- Create supportive partnerships between teachers and engineers such that engineers will serve as yearlong resources for teachers as they implement engineering practices into their classes.

Plan of Activities

- Review the Next Generation Science Standards - Engineering Practices and how they can be implemented in the middle school classroom.
- Actively participate in an engineering lesson.
- Create an engineering challenge that is suited for their curriculum
- Meet and collaborate with a team of engineers that will serve as a resource throughout the school year.
- Daily lunch with engineer-volunteers

Sponsor Opportunities

- Sponsorship of daily lunches for the teachers and facilitators.
- Supplies for the teacher team to bring back to their home school for engineering education.

Timeline for Engineers

- Attend a Lunch Meeting with Engineer-Teacher Teams on Friday July 17th , 11:00AM through 12:30PM
- Stay in contact with teacher teams as “engineer on call” to promote engineering in middle school. This contact will mostly be via telephone or web chat. Any live visits to the classroom would be individually arranged with your teacher team.

Target Audience

Teams of at least two middle school teachers from the same school, and practicing engineers interested in promoting engineering as a field of study and profession.

Expected Outcomes for the Engineers

- Opportunity to share your profession with the next generation of would-be engineers



UNIVERSITY of NEW HAMPSHIRE

Timeline for Teachers

- **One-week professional learning workshop** July 13th – 17th from 8:30am – 12:30 pm with lunch provided.
 - Monday - Thursday: 8:30-11:30 Program, 11:30-12:30 Sponsored Working Lunch
 - Friday: 9:00-11:00 Recap and plan for continued communication, 11:00-12:30 Lunch Meeting with Engineer-Teacher Teams
- One-week student learning camp, Design-Make-Code, July 20th – 24th from 8:30 – 12:30 with lunch provided.
 - **Teacher Pair from each school participates in one day of the summer camp** to facilitate student learning of engineering practices, Monday through Thursday, 8:30 – 11:30 Program, 11:30 – 12:30 Sponsored Working Lunch for respective Engineer-Teacher Team
- 2-3 workshops on Saturday morning during the school year (2015-2016) to discuss the incorporation of engineering practices in the classroom.

Expected Outcomes for the Teachers

- Upon completion of the academy, teachers will receive a stipend of \$500 each.
- At least one engineering design challenge/task will be incorporated into the curriculum during the school year.
- At least 9 communications (email, skype, class visit by engineer, etc.) will occur between the teacher and engineering team/partner.

Call for ASCE-NH Volunteers!

National Science Foundation's
Innovative Technology Experiences
for Students and Teachers

Volunteers will help teachers include STEM (Science Technology, Engineering and Mathematics) concepts in the classroom in a more engaging way! Volunteers will serve as the “engineer-on-call” for teachers who participate. Volunteer responsibilities will include:

1. Attend, live or via webinar, a one-hour summer training program for teachers to add industry perspective to classroom activity.
2. Respond to email questions from teachers who participate over the course of the year.
3. Attend, live or via webinar, a meeting during winter-break with teachers who participate.

Part of ASCE-NH's mission is “interaction with our educators and students.” This innovative technology experience is a superb way to promote the civil engineering profession!

If you have interest in this wonderful volunteer opportunity, please contact Professor Erin Santini Bell, Ph.D., P.E. by phone: 603-862-3850 or by email: erin.bell@unh.edu.

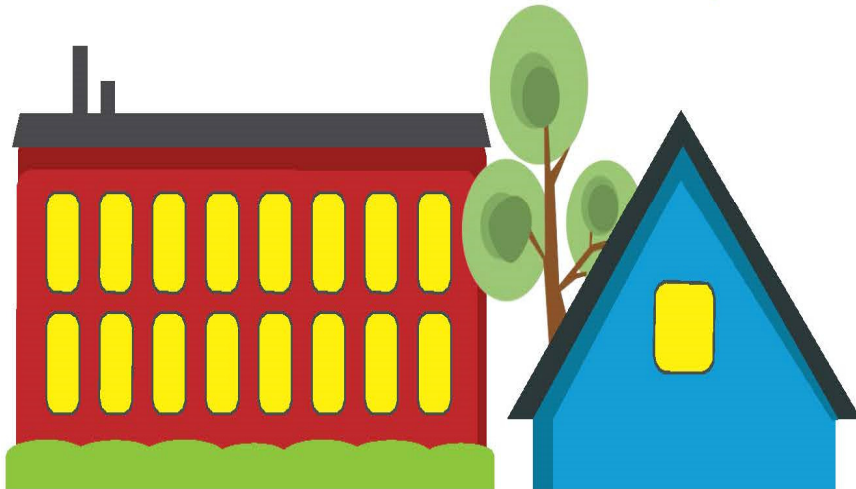
Region 1 - ASCE 2015 Spring and Summer Continuing Education Seminars and Workshops

Geographic Services is proud to announce the Continuing Education schedule of seminars and workshops for spring and summer scheduled in your geographic area. These seminars/workshops have been produced by ASCE's Continuing Education Department with your members in mind.

Program	City	State	City/State
Liability of Engineers: How to Stay out of Trouble	May 7–8, 2015	Secaucus, NJ	NYC Metro Area
Structural-Vibration Analysis: Design and Troubleshooting	June 3–5, 2015	Secaucus, NJ	NYC Metro Area
Structural Design for Bomb Blast Loads and Accidental Chemical Explosions (Buildings and Industrial Facilities)	June 10–12, 2015	Secaucus, NJ	NYC Metro Area
Financial Management for the Professional Engineer	June 18–19, 2015	Hyannis, MA	
Fundamentals of Earthquake Engineering	July 9–10, 2015	Boston, MA	
Instrumentation and Monitoring Bootcamp: Planning, Execution, and Measurement Uncertainty for Structural and Geotechnical Construction Projects	July 23–24, 2015	Hyannis, MA	
Streambank Stabilization for Restoration and Flood Control Projects	August 5–7, 2015	Portland, ME	
Two-Dimensional Modeling using HEC-RAS — NEW	August 19–21, 2015	Secaucus, NJ	NYC Metro Area
Design of Anchors, Embedments, and Foundations to Resist Horizontal and Vertical Forces	August 20–21, 2015	Portland, ME	
CM-at-Risk: Contracting for Owners, Consulting Engineers, and Contractors —NEW	August 27–28, 2015	Boston, MA	
Seismic Hazard Evaluation and Mitigation Using Simple Methods	September 10–11, 2015	Secaucus, NJ	NYC Metro Area
Managing the Design Process: Keeping on Schedule, within Budget, and Selecting the Right Resources	September 10–11, 2015	Portland, ME	
Design, Construction, and Renovation of Masonry Structures —Newly Updated for 2012 IBC and 2011 MSJC	September 17–18, 2015	Boston, MA	

For more information: *Jackie Simon, Manager, Geographic Services*
American Society of Civil Engineers
1801 Alexander Bell Drive
Reston, VA 20191
703-295-6143
jsimon@asce.org

FREE TRAINING *For*



BUILDING PROFESSIONALS

2015 SPRING WORKSHOP SERIES



NH Energy Code Workshops are designed as one-day sessions where Residential or Commercial building & design professionals can learn about the New Hampshire State Energy Code, the 2009 International Energy Conservation Code (IECC) and how to comply. The workshops focus on high performance building practices, building science, energy code requirements as well as the construction practices, tools and materials being used to verify building performance in a way that will meet or exceed the NH Energy Code. Residential workshops will conclude with information on how to comply with **ENERGY STAR Version 3** Program requirements and the benefits of the program. Both workshops will offer a sneak peak at the **new IECC 2015** requirements.

All workshops include FREE coffee and light refreshments for breakfast and a FREE lunch.

NH Energy Code

2015 Spring Workshop Series

WHO SHOULD ATTEND?

Builders, architects, engineers, designers, contractors, code officials, retailers, real estate professionals, etc.

WHY SHOULD I ATTEND?

- ✓ FREE Workshops
- ✓ Learn what it takes to meet & exceed the 2009 energy code
- ✓ FREE Lunch
- ✓ Workshops qualify for Continuing Education Units (CEUs) by:
 - American Institute of Architects (AIA)
 - Building Performance Institute (BPI)
 - International Association of Home Inspectors (InterNACHI)
 - And more!
- ✓ Workshops are eligible for Professional Development Hours (PDH) by the New Hampshire Board of Engineers
- ✓ Great networking opportunities

REGISTER ONLINE TODAY

www.nhenergycode.com

Space is limited so sign up today!



Cranium Challenge

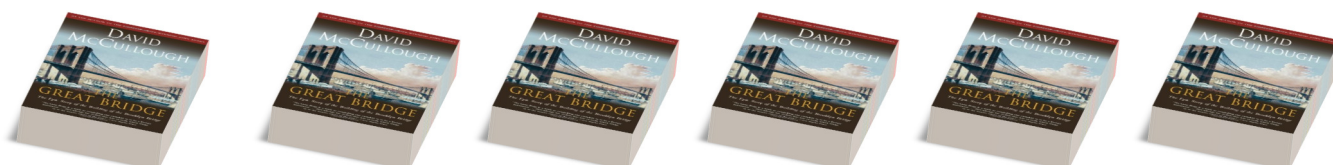
May 2015

No one submitted a correct answer for the March challenge! ☹

The answer for the March challenge:

The scale will register the same weight, regardless of the activity of the bird – well, aside from a momentary change if the bird is smashing itself into the sides of the box. This is tricky because your intuition tells you that the weight of the flying-bird-in-a-box system should be less than the weight of the resting-bird-in-a-box system. However, consider a sealed aquarium with a fish (and water, of course). Does the weight of this system (aquarium-water-fish) depend on the activity of the fish? No – the mass of the system is constant, and so the reading on the scale (the weight of the system) will not change. And, in the case of the bird, the container does not even need to be sealed – the bird is generating lift by exerting force on the air around it, which exerts force on the bottom of the box (and therefore the scale) equal to the weight of the bird. The MythBusters tackled this one in Episode 77 – “Birds in a Truck”.

The May Puzzle is as follows:



You arrange a thousand copies of David McCullough’s *The Great Bridge* in a long line (I have no idea why, but we have to set up this riddle somehow). You go down the line and open every book. Then, on your second pass, you close every second book. On your third pass, you open (if it is closed) or close (if it is open) every third book. You continue changing the states of the books in this fashion until you complete your 1000th pass, where you only change the state of the 1000th book. How many books are open?

Send your solutions to Justin Lowe, University of New Hampshire, Kingsbury Hall Room W220, 33 Academic Way, Durham, NH 03824, or by email to Justin.Lowe@unh.edu. Correct responses received by **July 10, 2015** will be recognized in a future issue of “The New Hampshire Civil Engineer”.

CLASSIFIED ADVERTISEMENTS



Louis Berger

Louis Berger, a New England cornerstone for over 45 years, is seeking sr. level engineers and managers in the Northeast with experience in Civil/Highway design, Structural/Bridge design and Traffic/Transportation Management.

Apply at louisberger.com/careers

NEW – NEW – NEW

Get your classified ad posted to the “Careers” tab without the accompanying printed ad.

E-mail your posting to fweaver@hoyletanner.com and request the “WEBSITE ONLY”

Classified rate of \$50.00

PROFESSIONAL DIRECTORY

<p>YOUR SOLUTIONS PROVIDER</p> <ul style="list-style-type: none"> • SaniTite® HP Pipe • N-12® Pipe • StormTech® • SWQU • FLEXSTORM® Inlet Filters • HP Storm Pipe • Geosynthetics • Nyloplast® • BaySaver® • MEGA GREEN™ Recycled Pipe  <p>For more information please contact 1-800-821-6710 or visit www.ads-pipe.com</p> <p><small>© 2014 Advanced Drainage Systems, Inc. 03/14 MH</small></p>	 <p>Civil & Structural Engineers Land Surveyors Environmental Consultants Landscape Architects</p> <p>Proud Supporters of ASCE NH</p> <p>www.allenmajor.com (603) 627-5500</p> <p>Manchester, NH Woburn, MA Lakeville, MA</p>	<p>listen. think. deliver.</p> <p>Water Environment Transportation Energy Facilities</p>  <p>Manchester, NH</p>		
 <p>Civilized Solutions</p> <p>Infrastructure Solutions</p> <p>Develop. Deliver. Operate. Done.</p> <p>Chris Garlick, P.E. Phone: (603) 733-4603 Email: chris@civilizedsolutions.com Web: civilizedsolutions.com</p>	<p>Providing New England With Quality Engineering Solutions For 37 Years</p> <ul style="list-style-type: none"> • Survey • Site Development • Traffic/Transportation • Civil & Structural Design • Inspections/Review • Bridge & Highway Design • Water/Wastewater • Solid Waste Management • Construction Management • Value Engineering  <p>CLD Consulting Engineers, Inc. 540 North Commercial St., Manchester, NH 03101 www.cldengineers.com phone: 603-668-8223 fax: 603-668-8802</p>	<p>CONTECH® ENGINEERED SOLUTIONS</p> <p>FOR MORE INFORMATION, CONTACT:</p> <p>Steve Wolf, P.E. - Sales and Technical Consulting - 802-233-9110 Kevin Giambone, P.E. - Precast CON/SPAN and Plate Bridges - 518-636-5881 John Stiver, P.E., CPSWQ - Stormwater Treatment & Detention - 207-892-0348 Justin Reardon, P.E. - Vehicular and Pedestrian Truss Bridges - 207-885-6125</p> <p>Bridges Drainage Erosion Control Retaining Walls Stormwater Management Wastewater Treatment</p> <p>swolf@conteches.com • www.ContechES.com</p>		
<p>CMA ENGINEERS, INC. CIVIL/ENVIRONMENTAL ENGINEERS</p> <ul style="list-style-type: none"> • PORTSMOUTH 603-431-6196 • MANCHESTER 603-627-0708 <p>www.cmaengineers.com</p> <p>Engineering services of outstanding quality</p> <ul style="list-style-type: none"> • CIVIL • HIGHWAY • STRUCTURAL • WATER AND WASTEWATER • SOLID WASTE 	<p>DuBois & King CONSULTING ENGINEERS Since 1962</p> <p>www.dubois-king.com</p> <p>BEDFORD 603-637-1043 LACONIA 603-524-1166</p> <p>Bridges Civil/Site Dams Water/Sewer Airports Facilities</p>	<p>FAST LAB.</p> <p>Comprehensive water and soil testing services since 1980.</p>  <p>Eastern Analytical, Inc. 800.287.0525 • eailabs.com</p> 		
<p>FAY, SPOFFORD & THORNDIKE Engineers - Planners - Consultants</p> <p>FST 100 YEARS</p> <p>288 South River Road Bedford, NH 03110 1-800-835-8666 www.fstinc.com Twitter: @fstinc</p>	 <p>GeoInsight®</p> <p>Environmental Strategy & Engineering</p> <p>www.GeoInsight.com 800.217.1953</p>	<p>R.W. Gillespie & Associates, Inc.</p> <p>Geotechnical Engineering • Environmental Consulting • Materials Testing Services</p> <p>Portsmouth, NH 603-427-0244 Saco, ME 207-286-8008 Mansfield, MA 508-623-0101 www.rwgillespie.com</p>		
 <p>Offices Nationwide</p> <p>Local Office: 670 N. Commercial St. Suite 103 Manchester, NH 03101 Tel: 603-668-0880 Fax: 603-668-1199</p>  <p>ENGINEERING SOLUTIONS THAT STAND THE TEST OF TIME</p> <p>www.golder.com</p>	<p>EM2 ENGINEERS. INSPECTORS. PARTNERS.</p> <p>SERVING CLIENTS THROUGHOUT NEW ENGLAND FOR MORE THAN 25 YEARS</p> <table border="0"> <tr> <td>Construction Survey Bridge Inspection On-Call Services Bridge Design Roadway Design Hydraulics & Drainage</td> <td>Land Survey Structure Inspection Building Design Design / Build Traffic Design</td> </tr> </table> <p>197 LOUDON RD. • SUITE 310 • CONCORD NH 03301 P. 603.856.7854 • F. 603.856.7855</p>	Construction Survey Bridge Inspection On-Call Services Bridge Design Roadway Design Hydraulics & Drainage	Land Survey Structure Inspection Building Design Design / Build Traffic Design	<p>Environmental & Geotechnical Engineering & Consulting Regulatory Compliance, Permitting, & Training Remedial Design & Construction</p>  <p>GZA GeoEnvironmental, Inc. Engineers & Scientists</p> <p>380 Harvey Road, Manchester, NH 03103-3347 603-623-3600 603-624-9463 (fax) www.gza.com</p> <p>Solutions... Service... Satisfaction</p>
Construction Survey Bridge Inspection On-Call Services Bridge Design Roadway Design Hydraulics & Drainage	Land Survey Structure Inspection Building Design Design / Build Traffic Design			

New Hampshire Section ASCE

Quality Surface & Borehole Geophysics

Take a closer look. You'll like what you see!

HAGER-RICHTER GEOSCIENCE, INC.

<http://www.hager-richter.com>

603-893-9944

WBE certified in eleven states

HAYWARD BAKER

Geotechnical Construction

- ♦ AGGREGATE PIERS
- ♦ MICROPILES
- ♦ SOIL NAILS AND TIE-BACKS
- ♦ JET AND COMPACTION GROUTING
- ♦ SOIL MIXING

COMPLETE GROUND MODIFICATION
SOLUTIONS AND SERVICES

Greg Simmons, P.E.
Business Development
Northeast Regional Office
800-888-4292

New England Area Office
401-334-2565

For a complete listing of offices, visit
www.HaywardBaker.com

SPECIALTY
FOUNDATION
CONTRACTOR

HEB Engineers

CIVIL • STRUCTURAL • SURVEY

www.hebengineers.com | 603-356-6936

Hoyle, Tanner & Associates, Inc.

Engineering

Planning

Design

Construction

Services

150 Dow Street
Manchester, NH 03101
(tel) 603-669-5555 • (fax) 603-669-4168

Pease International Tradeport
100 International Drive - Suite 360
Portsmouth, NH 03801
(tel) 603-431-2520 • (fax) 603-431-8067

www.hoyletanner.com



International Erosion Control Systems Inc.

Toll Free: 1-855-768-1420
Head Office: 519-768-1420
Fax: 1-855-768-1425

www.iecsusa.com

David Fairley

US National Sales Rep
dfairley@iecsusa.com
Cell: 607-644-5516

US Division:
Tampa, FL

Canadian Division:
West Lorne, ON



JOHN D. TURNER
PRESIDENT

JOHN TURNER CONSULTING, INC.

T 603.749.1841 F 603.516.6851
19 Dover Street, Dover, NH 03820

SH-MA

JTC-ONLINE.COM

Energy • Facilities • Government
Transportation • Water



2 Wall St., Suite 450 | Manchester, NH
603.623.4400 | www.kleinfelder.com

Loureiro

Engineering • Construction • EH&S • Energy • Waste

779 South Main Street
Manchester, NH 03102-5143
Tel: 603.625.8899
Fax: 603.625.8799

An employee-owned company

On the web at
www.Loureiro.com



McFarland Johnson

Highway • Bridge • Aviation • Environmental • Facilities
Site/Civil Engineering & Design Services

53 Regional Drive
Concord, NH 03301
Phone: (603) 225-2978
Fax: (603) 225-0095

www.mjinc.com



MHF Design Consultants, Inc.

ENGINEERS • PLANNERS • SURVEYORS

44 Stiles Road, Suite One
Salem, New Hampshire 03079
(603) 893-0720 www.mhfdesign.com

Reserved for YOUR
Company!

Minerallac[®] Company

(630) 543-7080

www.minerallac.com



GEOTECHNICAL / SOIL BORINGS / ENVIRONMENTAL / CONCRETE
STEEL / ROOFING / ASPHALT INSPECTION

100 SHEFFIELD ROAD - PO BOX 4776
MANCHESTER, NEW HAMPSHIRE 03108
TELEPHONE (603) 668-6016 FAX (603) 668-8641
NORTHBORO, MASSACHUSETTS



Civil Engineers
Structural Engineers
Traffic Engineers
Land Surveyors
Landscape Architects
Scientists

Contact:
Robert Duval, PE, LEED AP - President
(603) 472-4488 www.tfmoran.com
TFM Moran Inc., 48 Constitution Drive, Bedford, NH 03110

Nel Pretech



ENGINEERING A SUSTAINABLE FUTURE

www.nobiseng.com

MINORITY BUSINESS ENTERPRISE &
SMALL DISADVANTAGED BUSINESS

603.224.4182

COMPLIANCE / PERMITTING
BROWNFIELDS
FACILITIES / CAMPUS ENGINEERING
SUSTAINABLE / CIVIL SITE DEVELOPMENT
GEOTECHNICAL ENGINEERING
ENVIRONMENTAL SERVICES
WATER SUPPLY



PARSONS BRINCKERHOFF

Program/Construction Management • Planning • Engineering

650 Elm Street
Manchester, NH 03101
603-647-2012

Over 125 Years
of Engineering
Excellence

Visit our website: www.pbworld.com
Offices Worldwide



Pathways Consulting, LLC

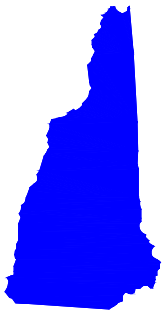
Planning • Civil & Environmental Engineering • Surveying •
Construction Assistance

240 Mechanic Street • Suite 100
Lebanon, New Hampshire 03766
Phone (603) 448-2200 • Fax (603) 448-1221 •
Email: pathways@pathwaysconsult.com

 <p>Quantum Construction Consultants, LLC</p>  <p>Bridges Roadways Structures Dams</p> <p>Providing Innovative Engineering Solutions to Municipalities and Private Clients</p> <p>27 Locke Road, Concord, NH 03301 (603)224-0859 quantum-cc.com</p>	<p>SANBORN HEAD</p> <p><i>Building Trust. Engineering Success.</i></p> <p>Providing technical consulting services to clients in the Industrial, Solid Waste, and Development Markets.</p> <p>www.sanbornhead.com</p>	 <p>TTG ENVIRONMENTAL CONSULTANTS, LLC</p> <p>27 LOCKE ROAD, CONCORD, NH 03301-5417 TELEPHONE: 603-228-1122 FAX: 603-228-1126</p> <p><i>"Providing Sustainable Water Resources Solutions"</i></p> <p>A Turner Group Company  Contact: jlavigne@hltturner.com</p>	
<p>TEPP LLC</p> <p>TRANSPORTATION ENGINEERING, PLANNING AND POLICY</p> <p>93 Stiles Road, Suite 201 Salem, New Hampshire 03079 Phone (603) 212-9133/Fax (603) 226-4108 tepp@teppllc.com/www.teppllc.com</p>	<p>Reserved for YOUR Company!</p>	<p>Serving Clients in</p> <p>education energy government health care industry real estate water & wastewater</p>  <p>Tighe & Bond</p> <p>Consulting Engineers Environmental Specialists</p>	
 <p>Since 1985 TTI Environmental, Inc.</p> <p>an integrated environmental service organization CONSULTING • CONTRACTING • ENGINEERING</p> <p>A Service Disabled Veteran Owned Small Business (SDVOSB)</p> <p>Moorestown, NJ www.ttienv.com 856-840-8800</p>	<p>ENGINEERING DIVISION</p> <p>Civil/Site Design Landscape Architecture Environmental MEP Municipal Inspection & Testing Transportation Structural</p> <p>93 Stiles Road, Ste 201 Salem, NH 03079 603-226-1950</p> <p>13 Branch Street, Ste 111 Methuen, MA 01844 978-749-9929</p>	<p>The H.L. Turner Group Inc.</p> <p>Architects ■ Engineers ■ Building Scientists</p>  <p>Concord, NH ■ 603/228-1122 ■ www.hltturner.com</p>	<p>2 Bedford Farms Drive, Suite 200 Bedford, NH 03110 603.391.3900</p> <p>www.vhb.com</p> <p>Engineers Scientists Planners Designers</p>  <p>Serving New Hampshire for 35 Years</p>

Only \$16.50 per Month for Business Card Sponsorship

The ASCE NH Section thanks our many sponsors for their continuing support!



New Hampshire Section
P.O. Box 4953
Manchester, NH 03108

Address Correction?
1-800-548-ASCE or
www.asce.org/myprofile

Planning Calendar

May 14, 2015 NHSPE May Meeting – New Professional Engineers Dinner

May 18, 2015 ASCE Annual Dinner and Scholarship Night

June 5, 2015 ASCE Annual Golf Tournament

Visit the ASCE-NH Website (www.ascenh.org) for up to date details for upcoming meetings and events.

View the unified engineering calendar at www.nhecal.org .

Contact Nate Cote (Nate.Cote@swcole.com)
for details on upcoming meetings.